

A decorative graphic consisting of multiple thin, parallel blue lines that curve from the bottom left towards the top right, crossing over a dark blue horizontal bar.

# INSTALLATION GUIDE FOR SSI PRO TRADING

April 2014





**MỤC LỤC**

**1. Introduction .....3**

**2. System Requirements .....3**

*Minimum..... 3*

*Recommended..... 3*

**3. Software Requirements.....4**

*OS Environment..... 4*

*Web Browser..... 4*

*Extra Programs ..... 4*

**4. Install Windows XP Service Pack 3 .....5**

*Checking Procedures..... 5*

*Install Procedures [Reboot is required]..... 5*

**5. Install Windows Vista Service Pack 2.....5**

*Checking Procedures..... 5*

*Install Procedures [Reboot is required]..... 6*

**6. Install .Net Framework 4.0 .....6**

*Checking Procedures..... 6*

*Install Procedures [Reboot is required]..... 6*

**7. Install Firefox add-on (Microsoft .NET Framework Assistant .....7**

*Check Procedures..... 7*

*Install Procedures ..... 7*

**8. Install Adobe Reader (Latest Version).....8**

*Check Procedures..... 8*

*Install Procedures ..... 8*

**9. How to start PTS .....9**

*Procedures..... 9*

**10. FAQ .....10**



## 1. INTRODUCTION

Before starting the Pro Trading System (PTS), some preparations are needed since it is developed based on the Microsoft .Net framework 4.0. The following shows all necessary components according to different OS environments.

## 2. SYSTEM REQUIREMENTS

A minimum and recommended system requirements is provided for reference

### Minimum

OS	<i>Windows® XP/Vista/7</i>
CPU	<i>Intel Pentium 4 HT 2.8 GHz or faster processor</i>
Memory	<i>1GB Ram</i>
Graphics Card	<i>DirectX®7 compatible</i>

### Recommended

OS	<i>Windows® Vista/7</i>
CPU	<i>Intel Core 2 Duo 2.4 GHz</i>
Memory	<i>2GB Ram</i>
Graphics Card	<i>DirectX®9 compatible</i> <i>Support Aero Themes</i>



### 3. SOFTWARE REQUIREMENTS

As the necessary components are different according to OS environment and Web browser, please check and install according to the table shown below.

#### OS Environment

<b><i>Operation System</i></b>	<b><i>Required Components</i></b>
Windows XP	Service Pack 3 and .Net Framework 4.0
Windows Vista	Service Pack 2 and .Net Framework 4.0
Windows 7	Installed by default

#### Web Browser

<b><i>Web Browser</i></b>	<b><i>Required Components</i></b>
Internet Explorer	Version 6.0 or above
FireFox	Version 2.0 or above (with Add-on "Microsoft .NET Framework assistant ")

#### Extra Programs

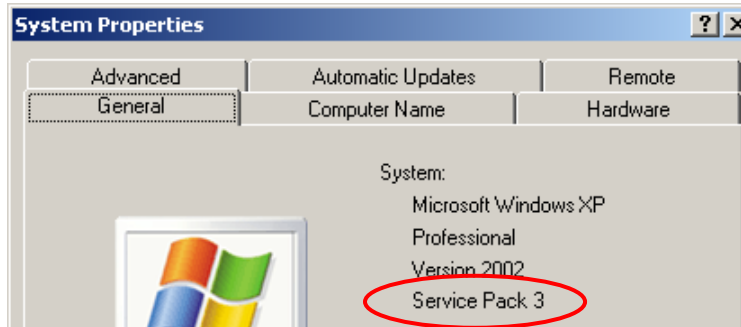
<b><i>Program</i></b>	<b><i>Required Components</i></b>
Acrobat Reader	Version 8.0 or above



## 4. INSTALL WINDOWS XP SERVICE PACK 3

### Checking Procedures

- a) Go to Control Panel > System > General
- b) The service pack version is shown under system information



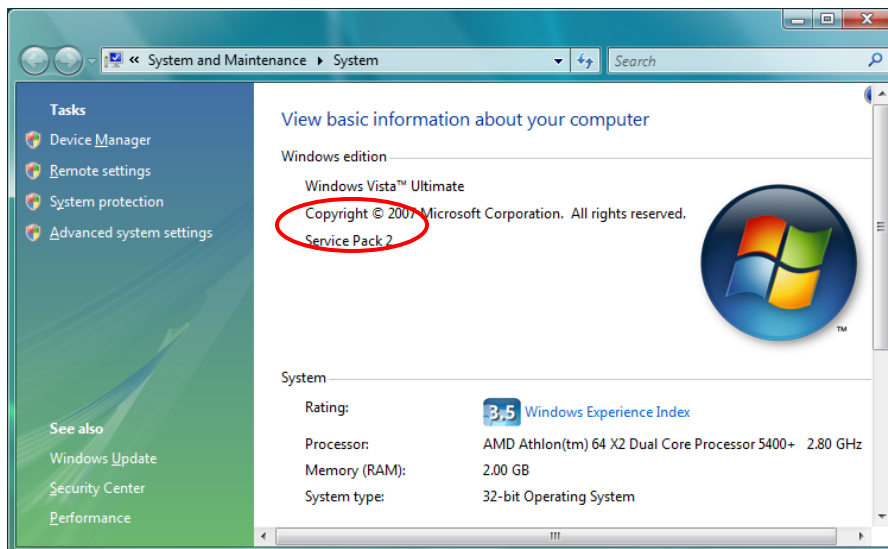
### Install Procedures [Reboot is required]

- a) To Update **offline**, download the full package from <http://www.microsoft.com/downloads/details.aspx?FamilyId=5B33B5A8-5E76-401F-BE08-1E1555D4F3D4&displaylang=en>
- b) **Or**, update **online** through Window Update

## 5. INSTALL WINDOWS VISTA SERVICE PACK 2

### Checking Procedures

- a) Go to Control Panel > System and Maintenance > System
- b) The service pack version is shown under system information





### Install Procedures **[Reboot is required]**

- a) To update offline, download the full package from  
**32Bit:** <http://www.microsoft.com/en-us/download/details.aspx?id=16468>  
**64Bit:** <http://www.microsoft.com/en-us/download/details.aspx?id=17669>
- b) Or, update **online** through Window Update

## 6. INSTALL .NET FRAMEWORK 4.0

### Checking Procedures

- a) Make sure that the service pack is installed according to OS version  
b) Go to PTS link by using Internet Explorer  
c) If the following message is shown in the webpage, then the .Net Framework is **NOT** exist

---

Only Internet Explorer [6.0 or above] / Firefox [2.0 or above] can start PTS

If this is Firefox, please download the add-on named [Microsoft .NET Framework Assistant](#)

- The **Microsoft .NET Framework Assistant** may not work with the latest version of Firefox

If this is already IE or add-on is installed in firefox, the following components may be missing in your computer.

- Windows Service Pack (depends on OS version)
- .NET Framework 4.0

Please download the [Installation Guide](#) for more details on requirements and install procedules.

---

### Install Procedures **[Reboot is required]**

- a) To update **offline**, download the full package installation file from  
[http://download.microsoft.com/download/9/5/A/95A9616B-7A37-4AF6-BC36-D6EA96C8DAAE/dotNetFx40\\_Full\\_x86\\_x64.exe](http://download.microsoft.com/download/9/5/A/95A9616B-7A37-4AF6-BC36-D6EA96C8DAAE/dotNetFx40_Full_x86_x64.exe)
- b) To update **online** through internet, download the installation starter from  
<http://www.microsoft.com/en-us/download/details.aspx?id=17718>



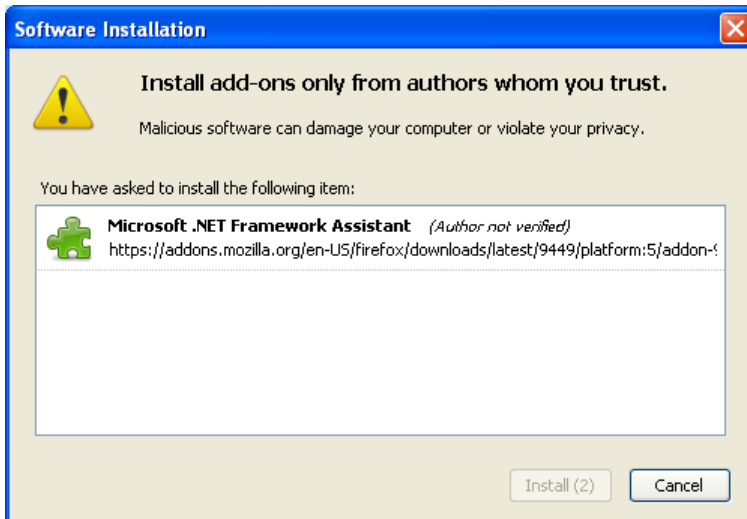
## 7. INSTALL FIREFOX ADD-ON (MICROSOFT .NET FRAMEWORK ASSISTANT)

### Check Procedures

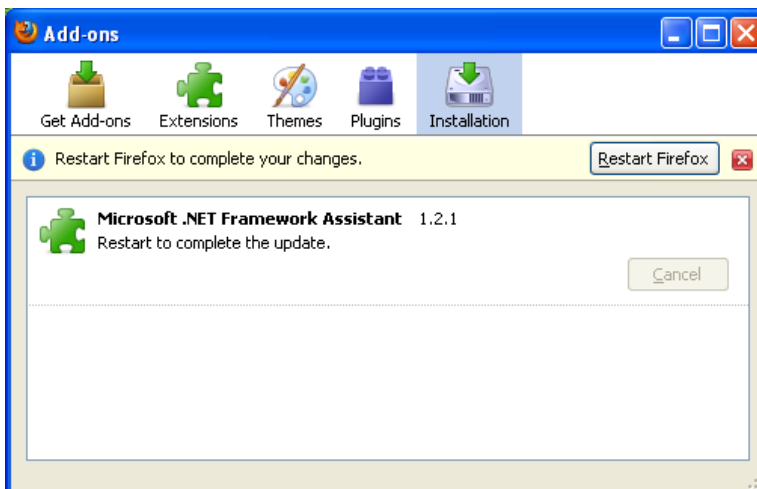
- a) Go to Tools→Add-ons
- b) Check if the “Microsoft .NET Framework Assistant [version]” is exist or not

### Install Procedures

- a) Go to <https://addons.mozilla.org/en-US/firefox/addon/9449/>
- b) Press “Continue to Download” button and the License Agreement is shown
- c) After reading and accept it, press “Accept and Install” button and the Software Installation dialog will popup



- d) Press “Install” button to start
- e) Once the installation is completed, press “Restart Firefox” button to apply the changes





## 8. INSTALL ADOBE READER (LATEST VERSION)

### Check Procedures

- a) For Window XP, go to Control Panel → Add and Remove Programs
- b) For Window Vista or 7, go to Control Panel → Programs → Programs and Features
- c) Check if the “Adobe Reader x.x.x” is exist or not

### Install Procedures

- a) To update **offline**, download the full package installation file from adobe website.  
<http://get.adobe.com/reader/>

- b) Click on the “Install Now” icon



- c) Follow the instruction by Adobe and finish the installation process accordingly





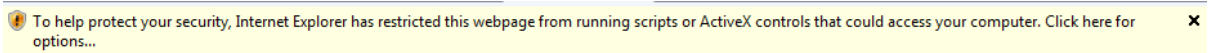
## 9. HOW TO START PTS


This is the procedures to start PTS.

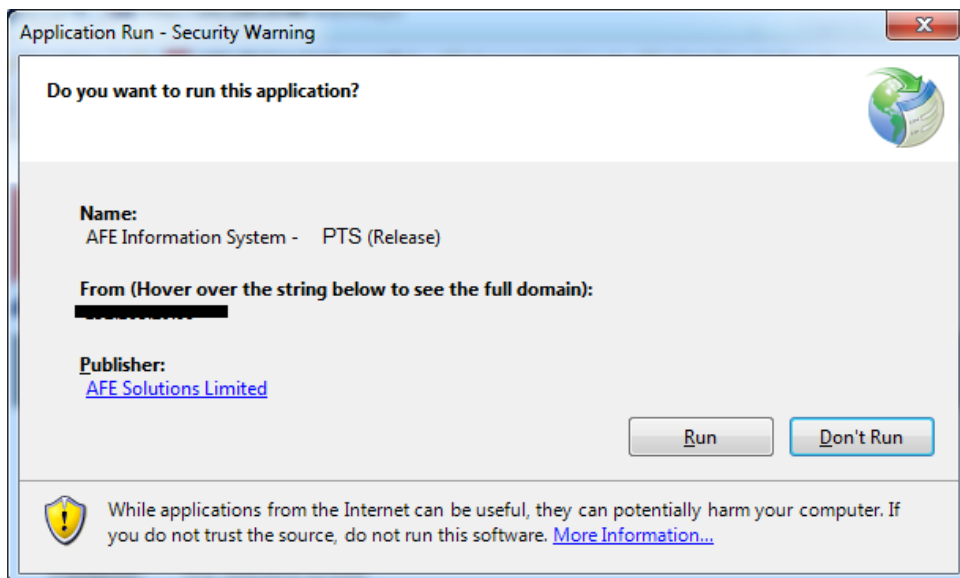
### Procedures

For the first time users,

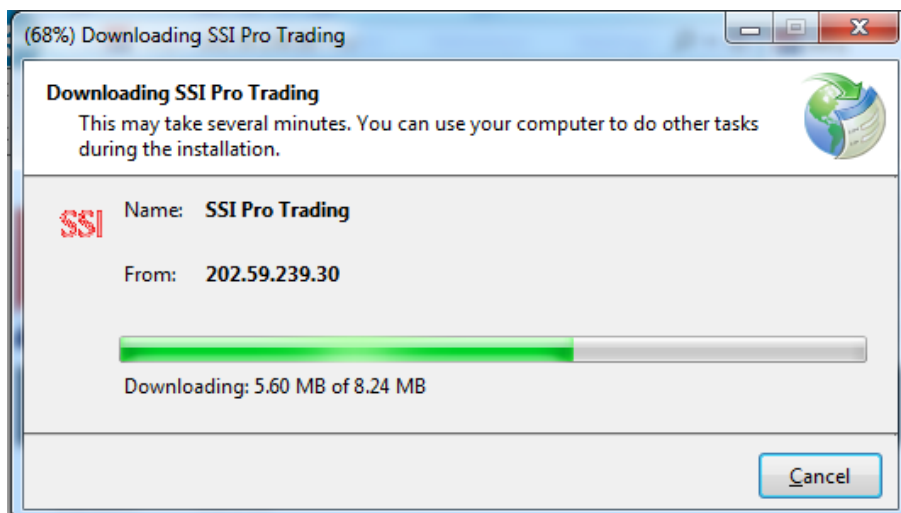
- a) Go to PTS Link by Internet Explorer
- b) Please click on “*Allow Blocked Content*” if the follow exists in the Internet Explorer



- c) Click on the  button
- d) When the Security Warning Dialog popup, click on Run button to start

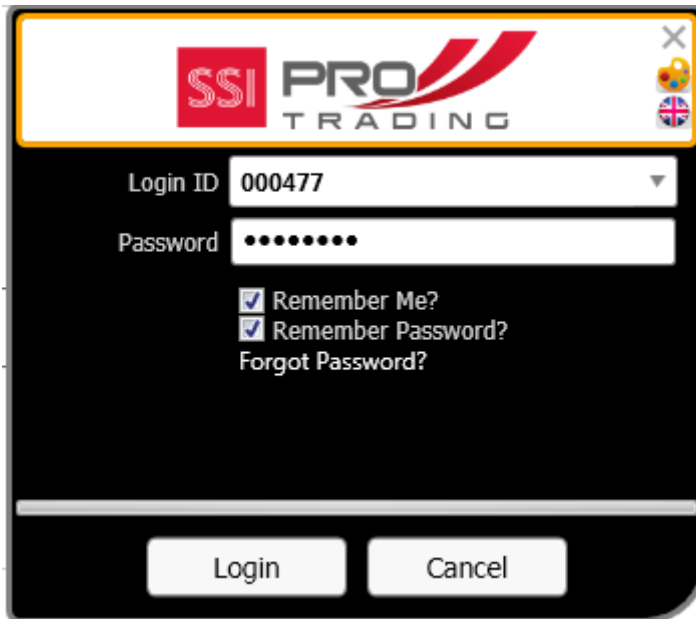


- e) Then another dialog will popup with downloading progress





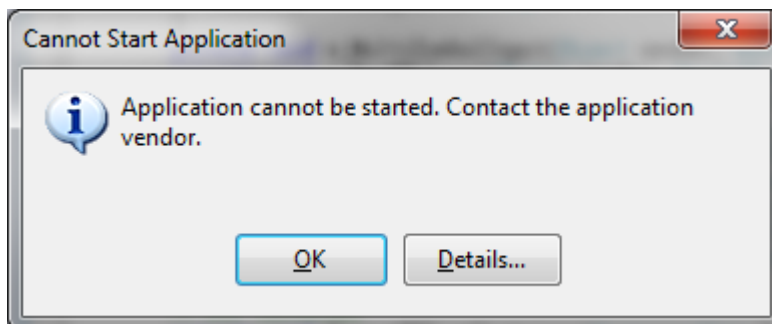
Finally, the login dialog popup



- f) For non-first time user, just click on the shortcut icon in desktop.

## 10. FAQ

- (1) In case the PTS cannot be started and the “Cannot Start Application” dialog is shown, please delete all the files and folders in followings accordingly



For WindowsXP

C:\Documents and Settings\{User Account}\Local Settings\Apps\

For Windows Vista or 7

C:\Users\{User Account}\AppData\Local\Apps\